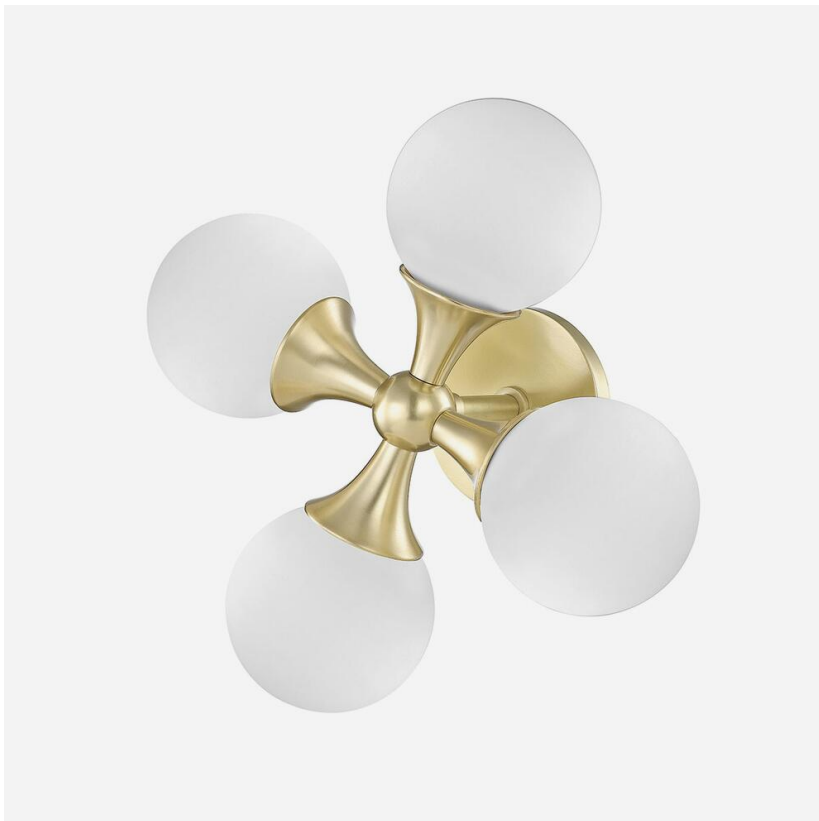


ANDREW MARTIN



Astoria

Wall Light

Astoria is a classic wall light with an antique brass finish complimented by the white glass pearl shaped bulbs. The criss-cross structure casts light in four different directions to softly light up your space.

Specification

Product Code:	LMP1337
Product Height:	35.6 (cm)
Product Width:	35.6 (cm)
Product Depth:	17.2 (cm)
Product Weight:	2.27 (kg)
Bulb Included:	Yes
Recommended	LED
Bulb Type:	
Collection:	Signature
Assembly:	Assistance From A Qualified Electrician To Install Is Recommended.
No. of Bulbs:	4
Dimmable:	Y
Shade	Glass
Composition:	
IP Rating:	IP20
CBM:	0.043
Packed Weight:	3.18 (kg)
EU Commodity	94051990
Code:	
Country of Origin:	China

