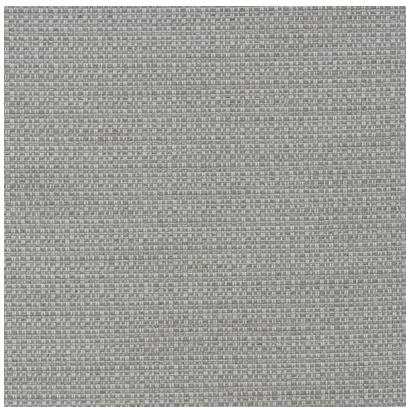


ANDREW MARTIN



Tender Storm

Fabric

Luxurious weave in grey storm

Tender is a luxurious weave which transports you to the buzz of the marina nightlife. A chunky natural weave with flashes of shiny viscose slub yarns to add a touch of glamour.

Specification

Product Code:	BOTEST
Width:	140 (cm)
Composition:	38% Visc 29% Cotton 18% Linen 15% Poly
Sold By:	Metre
End Use:	Multipurpose
Care Instructions:	Professional Dry Clean Only
Martindale / Rub	44,000
Test:	
Flame Code:	Cig Only
Weight:	650 (gsm)
Collection:	Boathouse Patternbook
EU Commodity	55164300
Code:	
US Commodity	5516430020
Code:	
Country of Origin:	Italy

