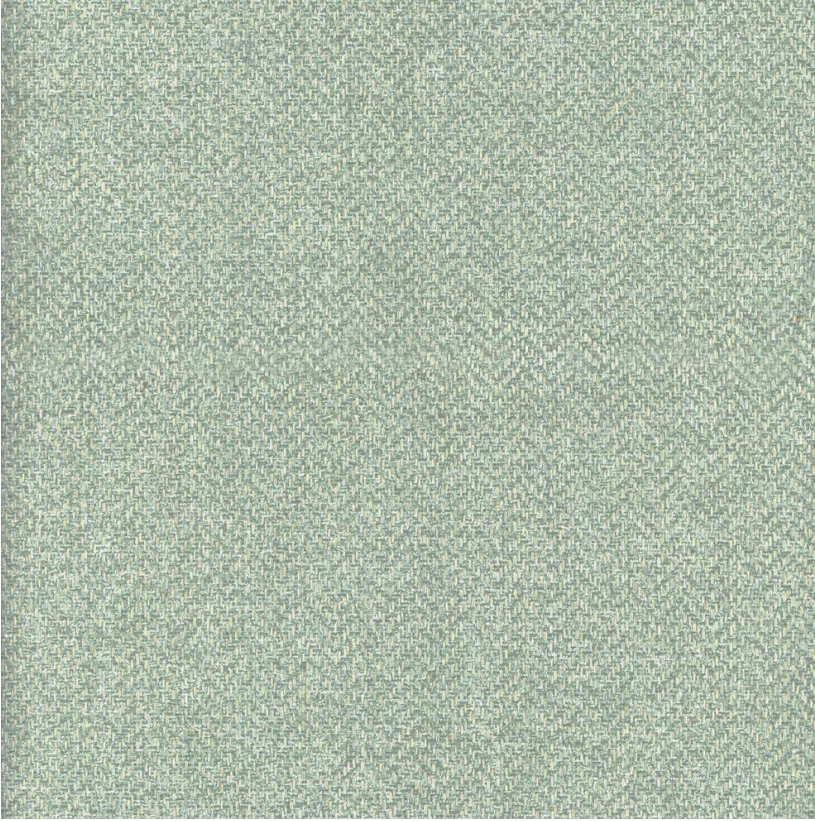


ANDREW MARTIN



Nevada Shallow

Fabric

A cascading herringbone weave in Shallow inspired by the mighty Nevada waterfall of Yosemite National Park. Created in collaboration with AquaClean the fabrics are woven using pre-treated yarns that allow household stains to be easily removed with water, giving the fabric immense hardwearing qualities reminiscent of the environment that inspired it.

Specification

Product Code:	CANESHA
Width:	140 (cm)
Composition:	73% Polyester 18% Cotton 9% Rayon
Sold By:	Metre
End Use:	Upholstery
Martindale / Rub Test:	25,000
Flame Code:	Cig And Match
Weight:	0.4 (gsm)
Collection:	Canyon Pattern Book
EU Commodity Code:	58013600
US Commodity Code:	5808900010
Country of Origin:	Spain

