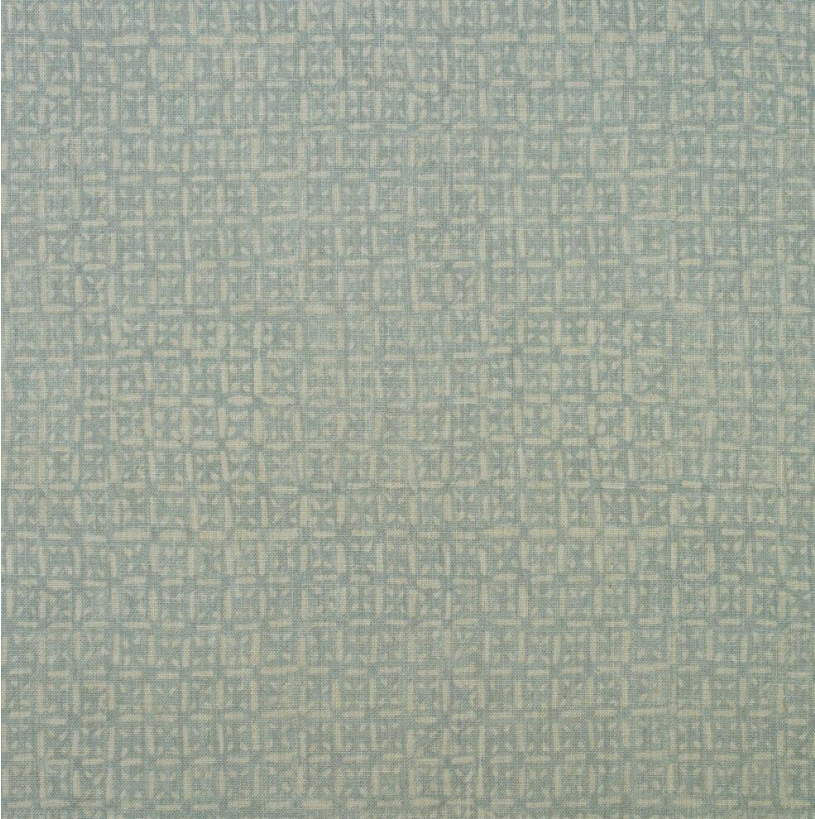


ANDREW MARTIN



Nest Mist

Fabric

Batik print fabric designed with Sophie Paterson

A small-scale batik print on linen which reminds us of a loosely woven bird's nest and is based on an original Batik textile. Part of the Woodland collection designed in collaboration with interior designer, Sophie Paterson.

Printed on the edge of the Lake District using ECOFAST technology, a digital pigment printing method which uses 50% less water than traditional techniques, ensures it is also kinder on our planet.

Specification

Product Code:	SPANEMI
Width:	137 (cm)
Composition:	82% Viscose 18% Linen
Sold By:	Metre
Pattern Repeat (Vertical):	31.5 (cm)
Pattern Repeat (Horizontal):	22.8 (cm)
End Use:	Curtains, Upholstery
Care Instructions:	Professional Dry Clean Only
Martindale / Rub Test:	30,000
Flame Code:	Cig Only
Weight:	300 (gsm)
Collection:	Woodland Pattern Book
EU Commodity Code:	54079400
US Commodity Code:	5407941000
Country of Origin:	United Kingdom

