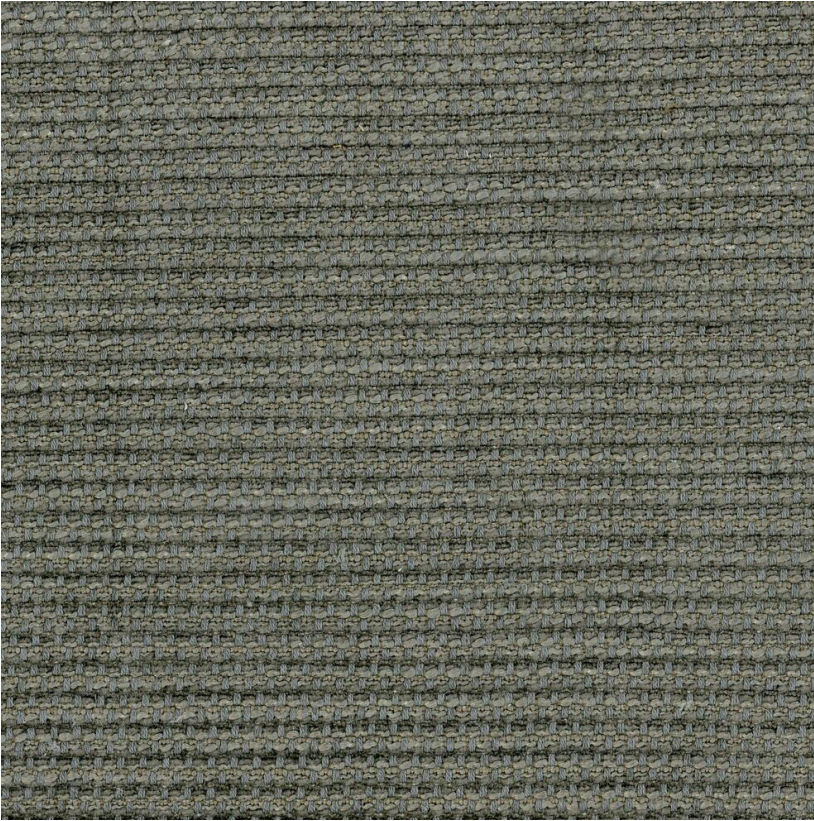


ANDREW MARTIN



Molfetta Charcoal

Fabric

A rustic open weave with soft linen chenille Molfetta Slate is a dark grey shade and perfect for upholstery. Pair with printed fabrics from the Salento collection such as Fasano or Ostuni to bring an element of the regions relaxed rustic sophistication into your own home.

Specification

Product Code:	SALMOLCHA
Width:	140 (cm)
Composition:	43% Linen 28% Cotton 25% Viscose 4% Polyester
Sold By:	Metre
End Use:	Upholstery
Care Instructions:	Professional Dry Clean Only
Martindale / Rub	25,000
Test:	
Flame Code:	Cig And Match
Weight:	690 (gsm)
Collection:	Salento Pattern Book
EU Commodity	53092900
Code:	
US Commodity	5801901000
Code:	
Country of Origin:	Italy

