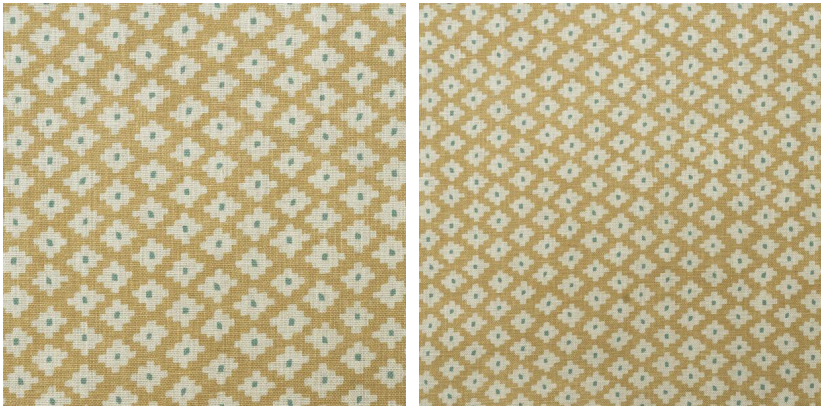


ANDREW MARTIN



Maze Honey

Fabric

This orderly geometric represents the formal structure of a boxed hedge maze but is reminiscent of a decorative stone or bricked garden path. The two-tone design, in warm golden yellow with vibrant turquoise detail, makes this print easy to pair with any of the designs from our [Garden Path](#) collection.

Printed on the edge of the Lake District using ECOFAST technology, a digital pigment printing method which uses 50% less water than traditional techniques, ensures it is also kinder on our planet.

Specification

Product Code:	GPMAHOTU
Width:	137 (cm)
Composition:	82% Viscose 18% Linen
Sold By:	Metre
Pattern Repeat (Vertical):	21.3 (cm)
Pattern Repeat (Horizontal):	45.7 (cm)
End Use:	Curtains, Upholstery
Care Instructions:	Professional Dry Clean Only
Martindale / Rub Test:	40,000
Flame Code:	Cig Only
Weight:	300 (gsm)
Collection:	Garden Path Pattern Book
Next Stock Due:	17 May 2024
EU Commodity Code:	54079400
US Commodity Code:	5516940050
Country of Origin:	United Kingdom

