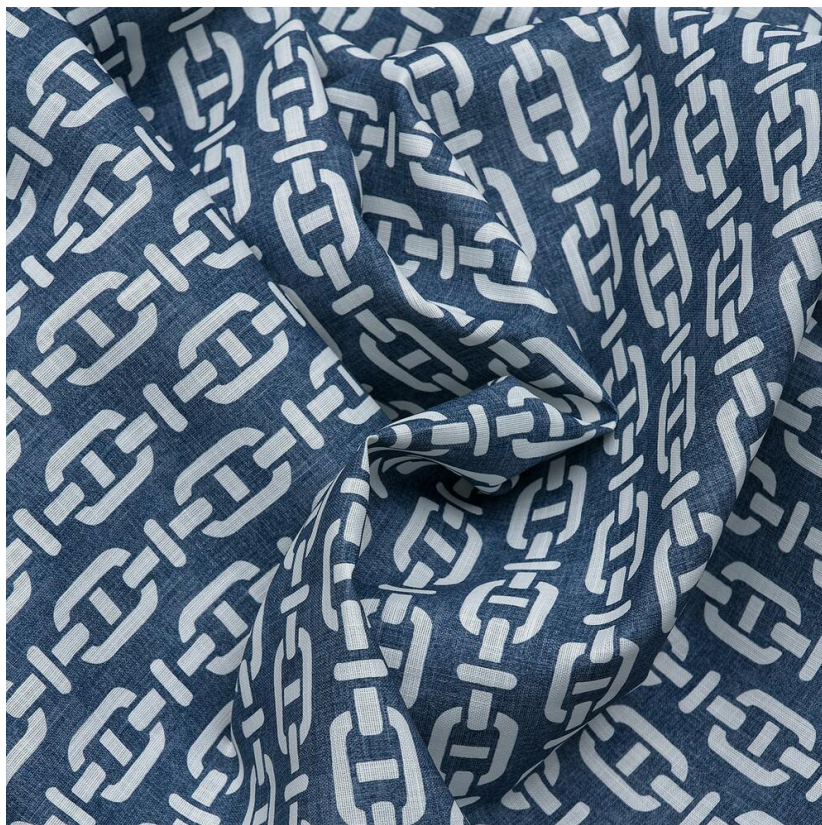


ANDREW MARTIN



Burlington Navy Outdoor

Fabric

Designed in collaboration with Sophie Paterson this outdoor fabric is an updated version of our classic Burlington design. Its chain link print in navy and white adds a smart, elegant touch to your outdoor space.

This fabric has a shower resistant finish which is also anti-mould, anti-mildew and anti-microbial. Each fabric has been printed using EcoFast digital pigment printing methods, which use 50% less water than traditional print methods. We do recommend, however, that this fabric is looked after carefully and best used in dry weather. As with most outdoor textiles, they should be stored inside when not in use, or during periods of wet, cold or damp weather.

This fabric can be FR treated to BS5852 Match Upholstery for indoor use.

Specification

Product Code:	SPABUROUNA
Width:	137 (cm)
Composition:	100% Polyester
Sold By:	Metre
Pattern Repeat (Vertical):	9.2 (cm)
Pattern Repeat (Horizontal):	8.6 (cm)
End Use:	Upholstery, Cushions
Care Instructions:	Professional Dry Clean Only
Martindale / Rub Test:	50,000
Flame Code:	Cig Only
Weight:	221 (gsm)
Collection:	Sophie Patterson Outdoor
EU Commodity Code:	54075400
US Commodity Code:	5407540000
Country of Origin:	United Kingdom

