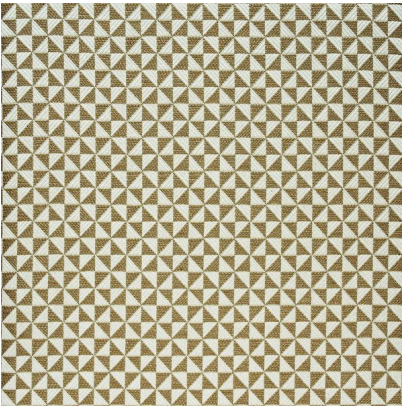


ANDREW MARTIN



Bruton Tan

Fabric

Designed in collaboration with Sophie Paterson Bruton takes its name from the charming street that runs off of Berkeley Square in Mayfair. A smart cotton and linen mix jacquard weave, in rich tan this simple geometric design is smart and elegant upholstery fabric, perfect for layering with plains or larger prints.

Specification

Product Code:	SPBRTA
Width:	140 (cm)
Composition:	40% Viscose 38% Cotton 18% Linen 4% Polyester
Sold By:	Metre
Pattern Repeat (Vertical):	5.2 (cm)
Pattern Repeat (Horizontal):	5.2 (cm)
End Use:	Multipurpose
Care Instructions:	Professional Dry Clean Only
Martindale / Rub Test:	12,000
Flame Code:	Cig And Match
Weight:	600 (gsm)
Collection:	Online Exclusive Pattern Book
EU Commodity Code:	55164300
US Commodity Code:	5516430000
Country of Origin:	Italy

