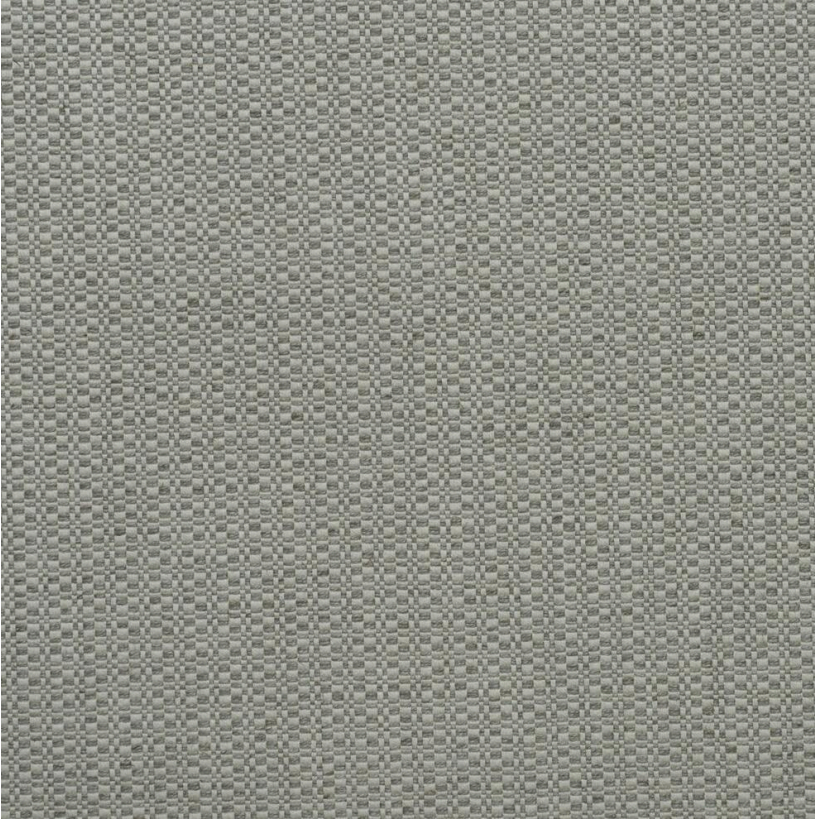


ANDREW MARTIN



Birch Fog

Fabric

Grey two-tone linen designed with Sophie Paterson

Birch is a tightly woven two-tone linen with a smooth finish resembling the papery bark of the elegant Silver Birch. Part of our **Woodland collection** and designed in collaboration with interior designer, Sophie Paterson.

Specification

Product Code:	SPABIFO
Width:	140 (cm)
Composition:	50% Viscose 25% Linen 14% Polyester 11% Cotton
Sold By:	Metre
End Use:	Multipurpose
Care Instructions:	Professional Dry Clean Only
Martindale / Rub	12,000
Test:	
Flame Code:	Cig And Match
Weight:	500 (gsm)
Collection:	Woodland Pattern Book
Next Stock Due:	17 May 2024
EU Commodity	55169300
Code:	
US Commodity	5516930020
Code:	
Country of Origin:	Italy

