

ANDREW MARTIN

Jervis

Chandelier

Chandelier with alabaster shade in aged brass

Enhance your living space with this Jervis chandelier, featuring a sleek brass base and two circular alabaster shades. This contemporary piece would be well-placed directly above a dining table to create a zoning effect, focusing your guests' eyes on the dining area.

The geometry of this captivating piece is asymmetric, which beautifully disrupts the viewer's expectations. The simplicity of the brass and off-white piece means it would blend easily with a range of colour schemes.

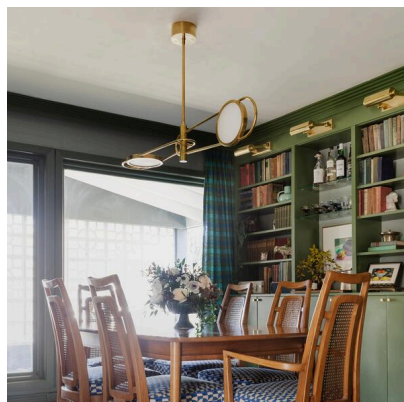
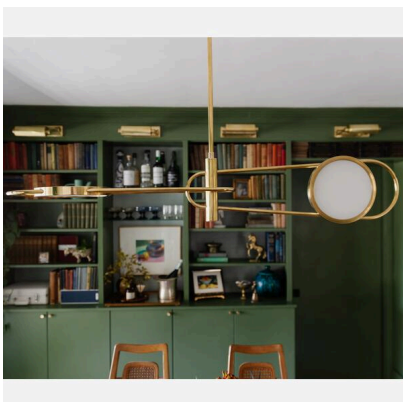
Each piece of alabaster is unique, containing its own character with natural veining patterns. As a result, we cannot guarantee each piece will match.

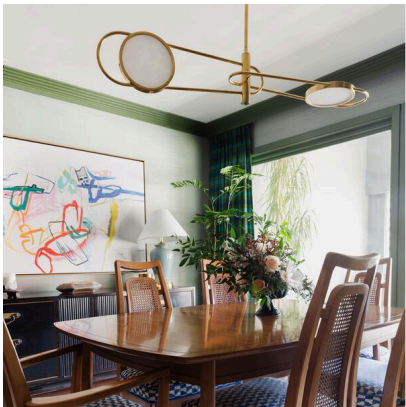
Medium Specification

Product Code:	LMP1852
Product Height:	22.9 (cm)
Product Weight:	4 (kg)
Product Diameter:	124.5 (cm)
Bulb Included:	No
Recommended Bulb Type:	LED
Collection:	Signature
Assembly:	Assistance From A Qualified Electrician To Install Is Recommended.
Min Drop Length (cm):	36.8
Max Drop Length (cm):	172.7
No. of Bulbs:	2
Dimmable:	Yes
Shade Composition:	Alabaster
IP Rating:	IP20
CBM:	0.133
Packed Weight:	5 (kg)
EU Commodity Code:	94051990
Country of Origin:	China

Large Specification

Product Code:	LMP1853
Product Height:	43.2 (cm)
Product Weight:	6 (kg)
Product Diameter:	124.5 (cm)
Bulb Included:	No





Recommended Bulb Type:	LED
Collection:	Signature
Assembly:	Assistance From A Qualified Electrician To Install Is Recommended.
Min Drop Length (cm):	58.4
Max Drop Length (cm):	196.9
No. of Bulbs:	4
Dimmable:	Yes
Shade Composition:	Alabaster
IP Rating:	IP20
CBM:	0.215
Packed Weight:	8 (kg)
EU Commodity Code:	94051990
Country of Origin:	China