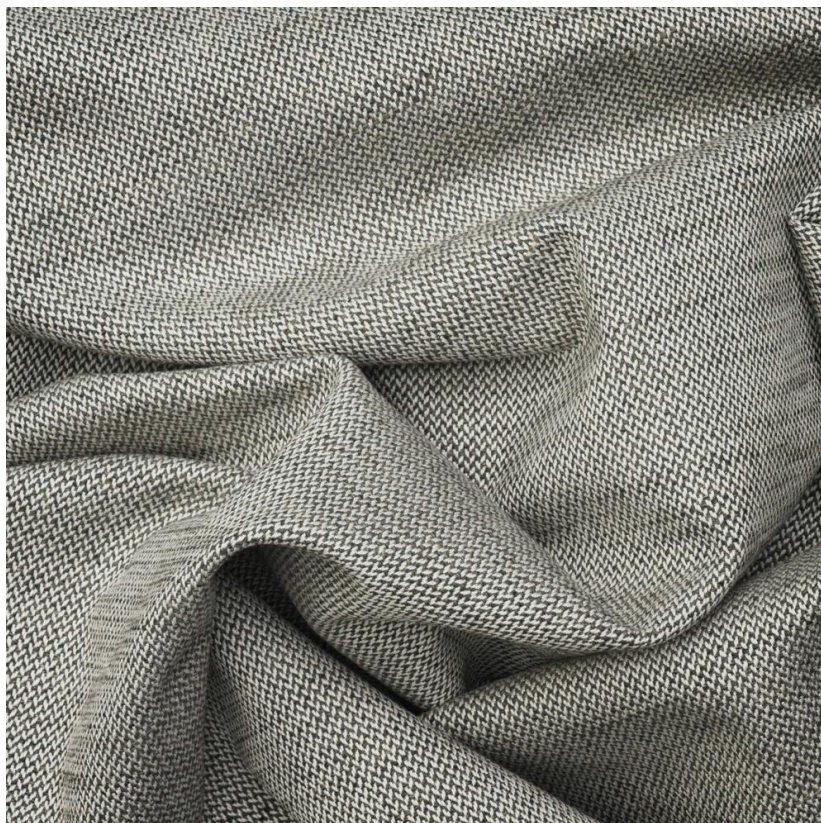


ANDREW MARTIN



Rowboat Thunder

Fabric

Subtle herringbone weave in dark grey thunder

Rowboat is a classic understated herringbone weave in an easily usable small scale. Made from wool and viscose it has a warm, organic and natural feel.

Specification

Product Code:	BOROTH
Width:	140 (cm)
Composition:	42% Cotton 24%Visc 16%Linen 12% Wool 6% Poly
Sold By:	Metre
End Use:	Multipurpose
Care Instructions:	Professional Dry Clean Only
Martindale / Rub	40,000
Test:	
Flame Code:	Cig Only
Weight:	610 (gsm)
Collection:	Boathouse Patternbook
EU Commodity	52113100
Code:	
US Commodity	5211490020
Code:	
Country of Origin:	Italy

