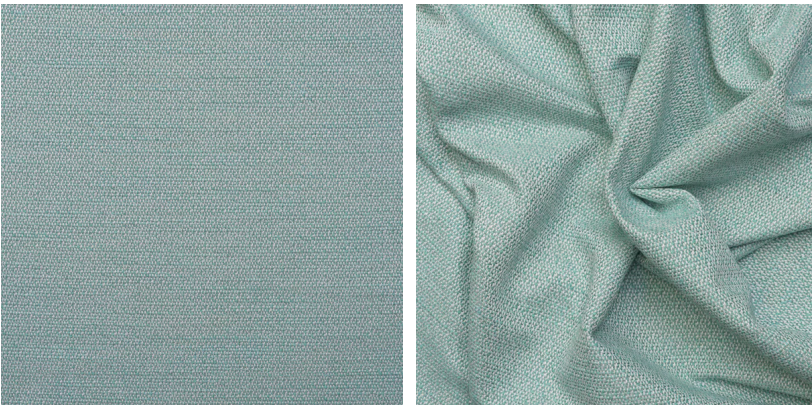
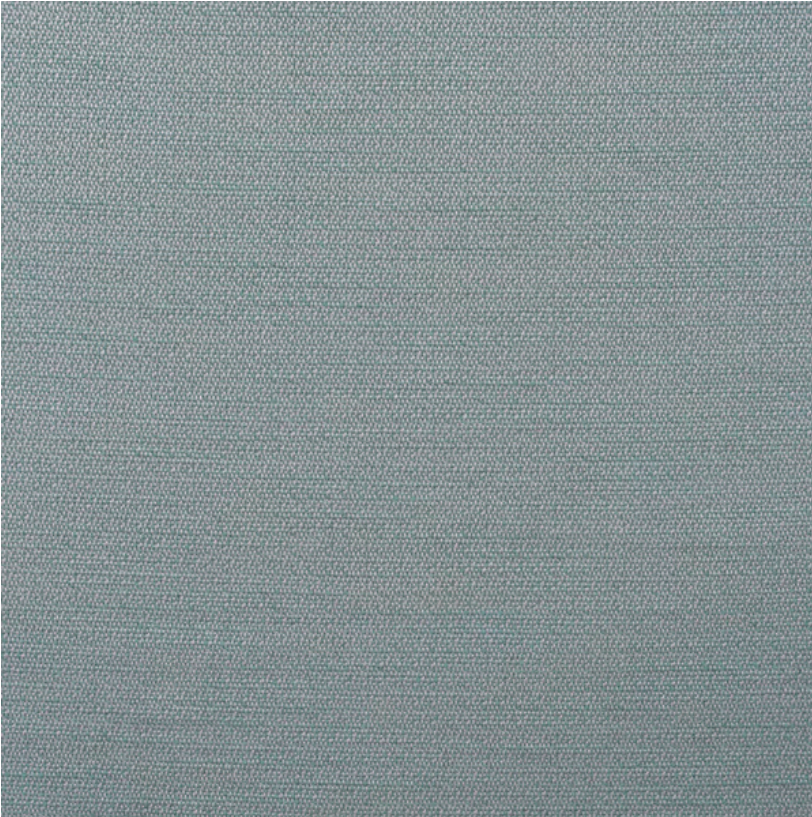


ANDREW MARTIN



Ravello Sea

Fabric

Luxury linen weave in soft turquoise

Made using a natural viscose and a twisted boucle linen yarn, Ravello Sea has a textured surface which contributes to a rustic yet luxurious feel. In a soft turquoise, this gorgeous fabric is woven in Italy with a stain repellent finish that is free from fluorocarbons.

Specification

Product Code:	AMRASE
Width:	140 (cm)
Composition:	40% Viscose 34%Linen 22%Cotton 4%Polyester
Sold By:	Metre
End Use:	Multipurpose
Care Instructions:	Professional Dry Clean Only
Martindale / Rub	25,000
Test:	
Flame Code:	Cig And Match
Weight:	750 (gsm)
Collection:	Amalfi Pattern Book
Next Stock Due:	28 June 2024
EU Commodity	55169300
Code:	
US Commodity	5516930000
Code:	
Country of Origin:	Italy

