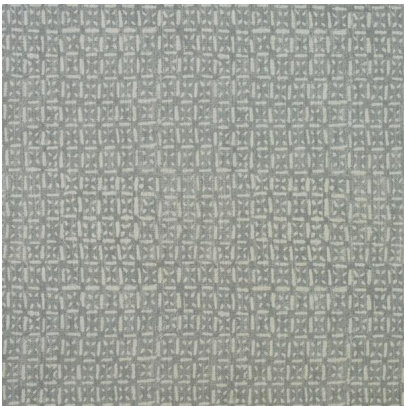


ANDREW MARTIN



Nest Storm

Fabric

Batik print fabric designed with Sophie Paterson

A small-scale batik print on linen which reminds us of a loosely woven bird's nest and is based on an original Batik textile. Part of the [Woodland collection](#) designed in collaboration with interior designer, Sophie Paterson.

Printed on the edge of the Lake District using ECOFAST technology, a digital pigment printing method which uses 50% less water than traditional techniques, ensures it is also kinder on our planet.

Specification

Product Code:	SPANEST
Width:	137 (cm)
Composition:	82% Viscose 18% Linen
Sold By:	Metre
Pattern Repeat (Vertical):	31.5 (cm)
Pattern Repeat (Horizontal):	22.8 (cm)
End Use:	Curtains, Upholstery
Care Instructions:	Professional Dry Clean Only
Martindale / Rub Test:	30,000
Flame Code:	Cig Only
Weight:	300 (gsm)
Collection:	Woodland Pattern Book
EU Commodity Code:	54079400
US Commodity Code:	5407941000
Country of Origin:	United Kingdom

