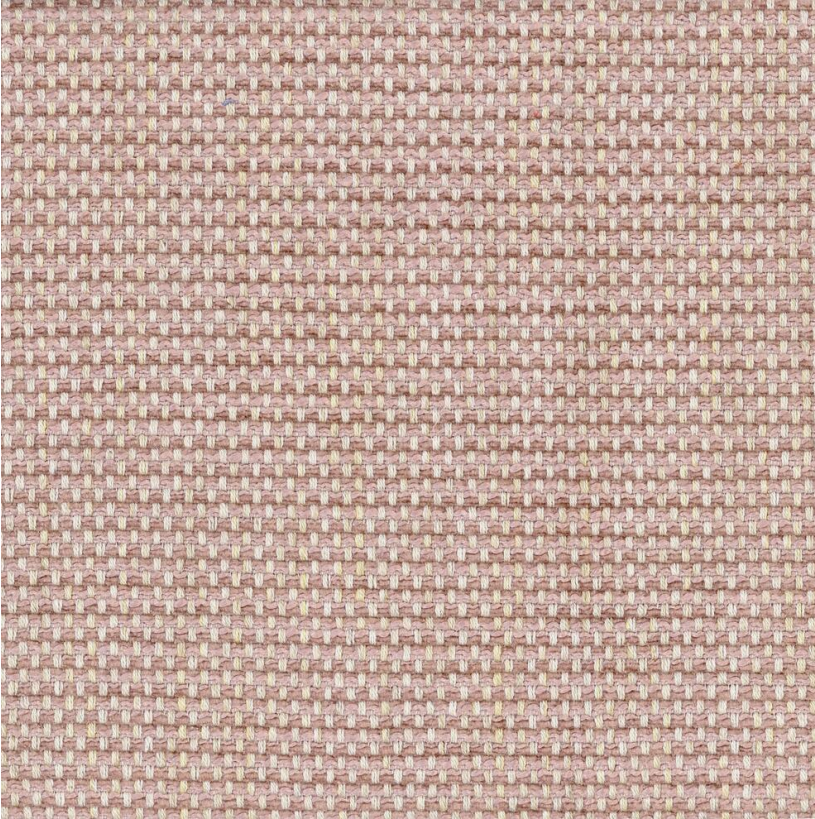


ANDREW MARTIN



Molfetta Smock

Fabric

A rustic open weave with soft linen chenille Molfetta Smock is a rustic rose hue and perfect for upholstery. Pair with printed fabrics from the Salento collection such as Fasano or Ostuni to bring an element of the regions relaxed rustic sophistication into your own home.

Specification

Product Code:	SALMOLSM
Width:	140 (cm)
Composition:	43% Linen 28% Cotton 25% Viscose 4% Polyester
Sold By:	Metre
End Use:	Upholstery
Care Instructions:	Professional Dry Clean Only
Martindale / Rub Test:	25,000
Flame Code:	Cig And Match
Weight:	690 (gsm)
Collection:	Salento Pattern Book
EU Commodity Code:	53092900
US Commodity Code:	5801901000
Country of Origin:	Italy

