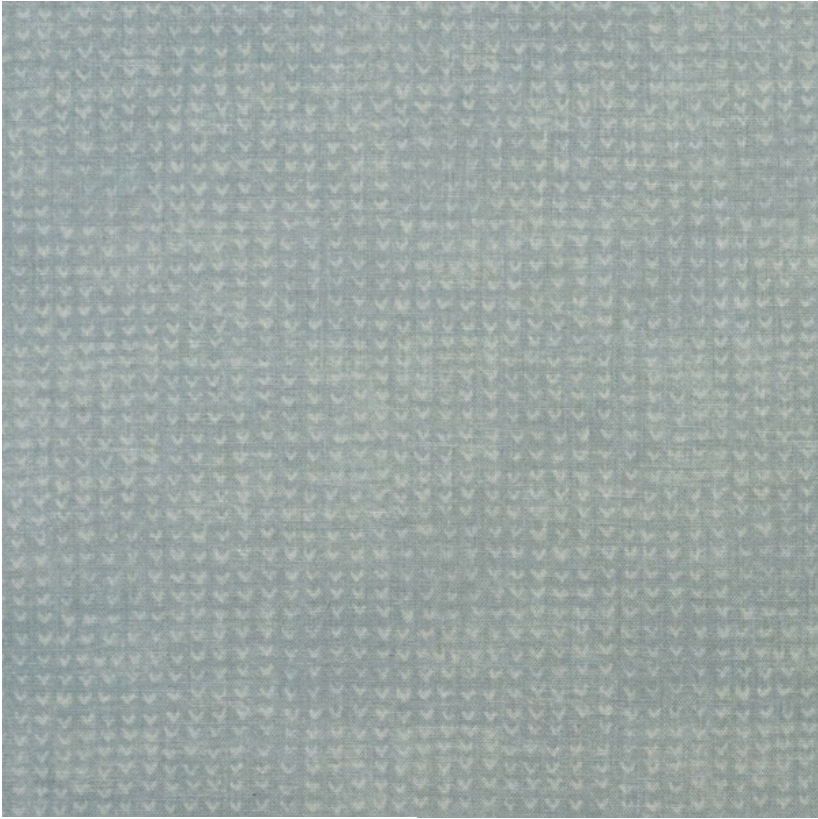


ANDREW MARTIN



Finch Mist

Fabric

Small-scale viscose linen fabric designed with Sophie Paterson

A small-scale viscose linen print from our [Woodland collection](#) that conjures up images of the delicate markings of birds' feet. Inspired by an original Batik printed document and designed in collaboration with interior designer, Sophie Paterson.

Printed on the edge of the Lake District using ECOFAST technology, a digital pigment printing method which uses 50% less water than traditional techniques, ensures it is also kinder on our planet.

Specification

Product Code:	SPAFIMI
Width:	137 (cm)
Composition:	82% Viscose 18% Linen
Sold By:	Metre
Pattern Repeat (Vertical):	20 (cm)
Pattern Repeat (Horizontal):	17.2 (cm)
End Use:	Curtains, Upholstery
Care Instructions:	Professional Dry Clean Only
Martindale / Rub Test:	45,000
Flame Code:	Cig Only
Weight:	300 (gsm)
Collection:	Woodland Pattern Book
Next Stock Due:	28 June 2024
EU Commodity Code:	54079400
US Commodity Code:	5407941000
Country of Origin:	United Kingdom

