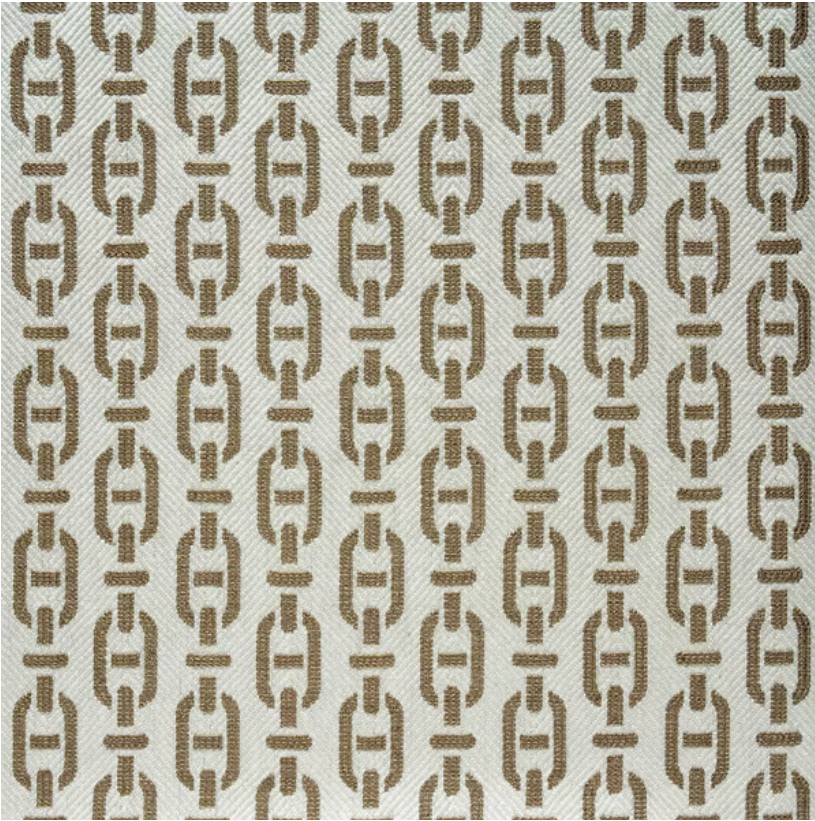


ANDREW MARTIN



Burlington Tan

Outdoor Fabric

Designed in collaboration with Sophie Paterson this geometric chain link design takes its cue from the grand architecture of Mayfair's Burlington Arcade, capturing the understated elegance and luxury of this iconic shopping venue. The simple print is clean and smart in rich tan, woven into a cotton and linen blend fabric which has a subtle metallic sheen.

Specification

Product Code:	SPBUTA
Width:	140 (cm)
Composition:	40% Viscose 38% Cotton 18% Linen 4% Polyester
Sold By:	Metre
Pattern Repeat (Vertical):	9 (cm)
Pattern Repeat (Horizontal):	9.2 (cm)
End Use:	Multipurpose
Care Instructions:	Professional Dry Clean Only
Martindale / Rub Test:	14,000
Flame Code:	Cig And Match
Weight:	600 (gsm)
Collection:	Online Exclusive Pattern Book
Next Stock Due:	03 May 2024
EU Commodity Code:	55164300
US Commodity Code:	5516430000
Country of Origin:	Italy

