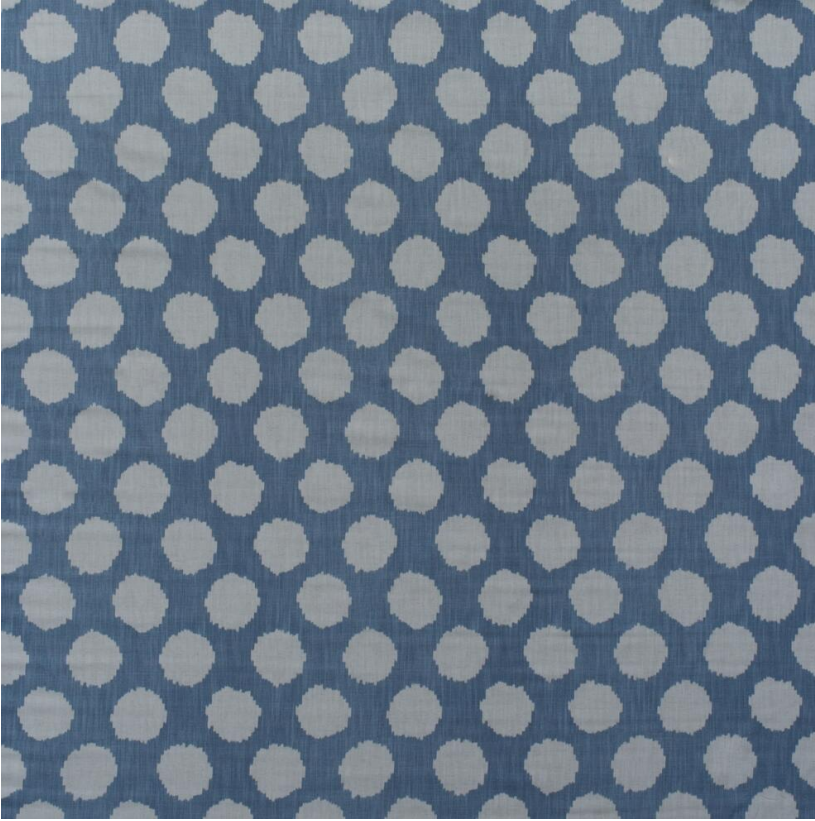


# ANDREW MARTIN



## *Beehive Denim*

Fabric

*Geometric cotton print in demin blue*

Beehive is a circular ikat spot design, which forms a loose geometric pattern similar to the structure that honeybees like to make. A fresh design that will bring a joyful splash of colour to your home.

Composed of a light cotton and linen material, this luxury fabric has a lovely, breathable finish, and with 35,000 rubs it is suitable for upholstery as well as curtains. Printed in the Lake District using ECOFAST technology, a digital printing method which uses 50% less water than traditional techniques.

Part of the Pavilion Collection.

## *Specification*

Product Code:	PAVBEDEN
Width:	137 (cm)
Composition:	90% Cotton 10%Linen
Sold By:	Metre
Pattern Repeat (Vertical):	39 (cm)
Pattern Repeat (Horizontal):	45.7 (cm)
Pattern Match:	Straight Match
End Use:	Curtains, Upholstery
Care Instructions:	Professional Dry Clean Only
Martindale / Rub Test:	35,000
Flame Code:	Cig Only
Weight:	252 (gsm)
Collection:	Pavilion Pattern Book
EU Commodity Code:	52095100
US Commodity Code:	5209110090
Country of Origin:	United Kingdom

